

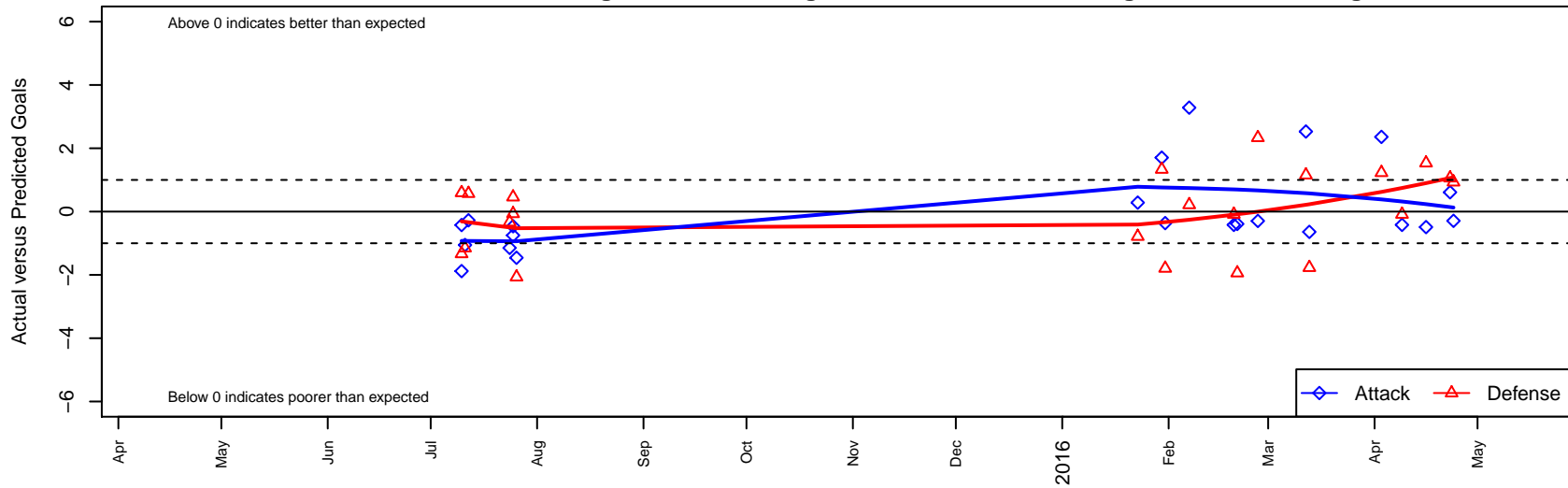
PCU Black G00

Portland City United SC
 Portland, OR
 G00 total strength=1131
 attack=3.34 defense=2.97
 fall league = PTT G00 Div 1 Red

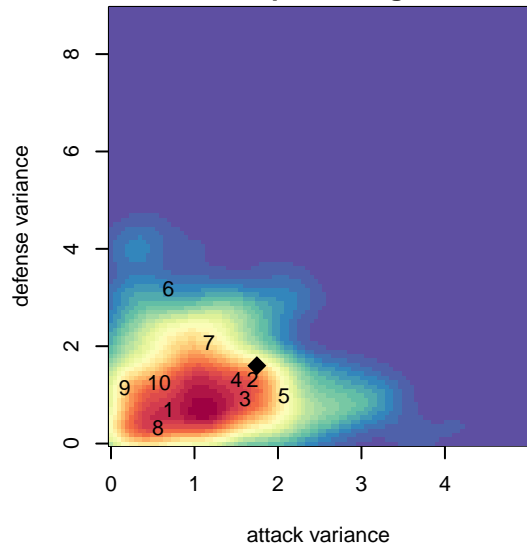
alt names used:
 PCU 00G Black
 PCU G00 Black
 PCU 00G Black

Venues played:
 2015 PCU Summer Classic U15-U16 Silver
 2015 Crossfire Select GU15 Silver
 2015 PTT G00 Division 1 Red
 2015 OYS Presidents Cup G00

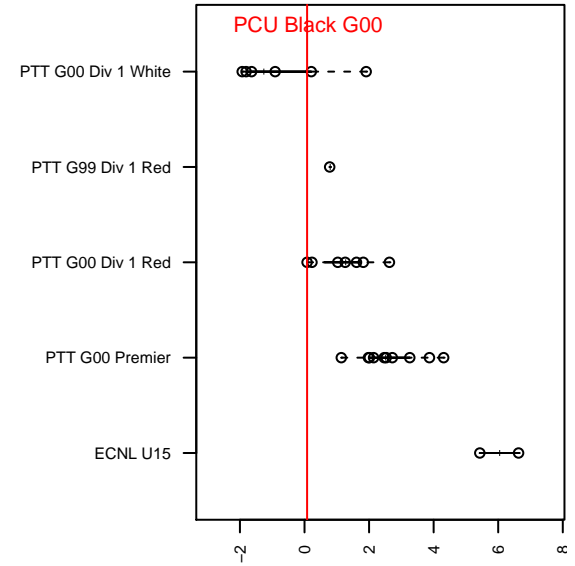
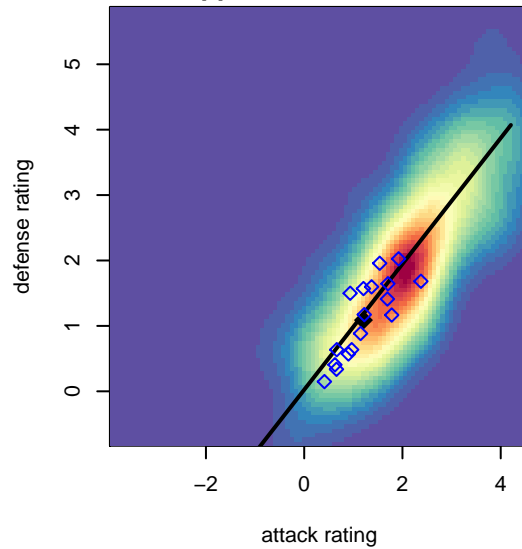
PCU Black G00
 Dots are actual minus expected GF (blue circles) and GA (red triangles).
 Blue line is smoothed change in attack strength. Red is smoothed change in defense strength.



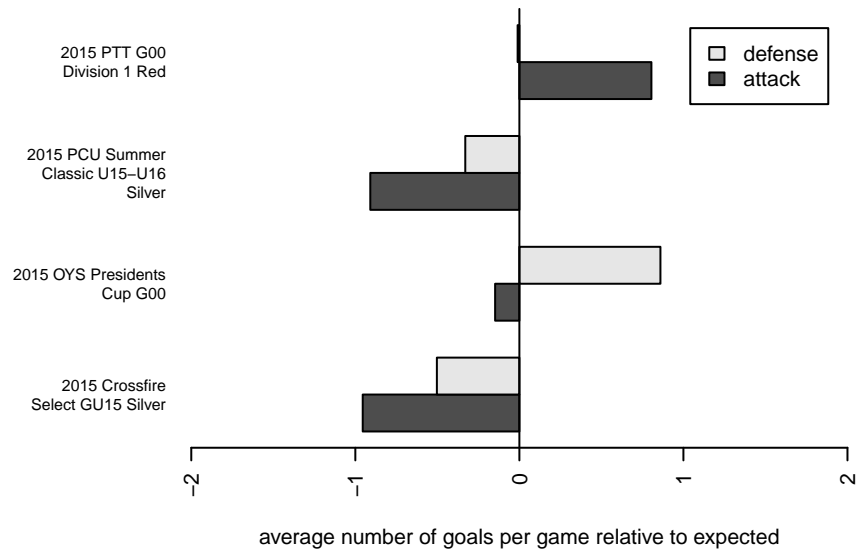
**attack and defense variance (black dot)
relative to other teams
and top 10 in region**



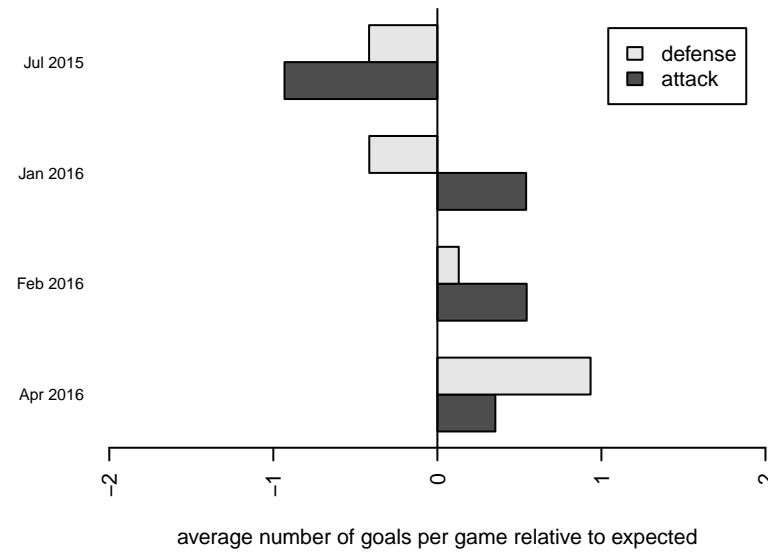
**attack and defense rating
relative to others at age
and all opponents in last 13 months**



Performance relative to 13 month average



Performance relative to 13 month average



| date | home | | away | | venue | pred.home | pred.away |
|------------|-------------------------------|---|-------------------------------|---|--|-----------|-----------|
| 2016-04-24 | PCU Black G00 | 1 | Washington Timbers Forest G00 | 0 | 2015 OYS Presidents Cup G00 | 1.29 | 0.93 |
| 2016-04-23 | PCU Black G00 | 1 | 4H Bayern Munich G00 | 3 | 2015 OYS Presidents Cup G00 | 0.39 | 4.06 |
| 2016-04-16 | Bend FC Timbers Red G00 | 0 | PCU Black G00 | 0 | 2015 OYS Presidents Cup G00 | 1.53 | 0.49 |
| 2016-04-09 | PCU Black G00 | 0 | ETFC Sol Red G00 | 2 | 2015 OYS Presidents Cup G00 | 0.42 | 1.91 |
| 2016-04-03 | PCU Black G00 | 3 | Eastside Timbers – Unk G00 | 1 | 2015 PTT G00 Division 1 Red | 0.64 | 2.23 |
| 2016-03-13 | Eastside Timbers – Unk G00 | 4 | PCU Black G00 | 0 | 2015 PTT G00 Division 1 Red | 2.23 | 0.64 |
| 2016-03-12 | Crossfire OR Blue I G00 | 1 | PCU Black G00 | 3 | 2015 PTT G00 Division 1 Red | 2.15 | 0.47 |
| 2016-02-27 | Westside Timbers Samba TS G00 | 0 | PCU Black G00 | 0 | 2015 PTT G00 Division 1 Red | 2.33 | 0.30 |
| 2016-02-21 | PCU Black G00 | 0 | 4H Bayern Munich G00 | 6 | 2015 PTT G00 Division 1 Red | 0.39 | 4.06 |
| 2016-02-20 | ETFC Sol Red G00 | 2 | PCU Black G00 | 0 | 2015 PTT G00 Division 1 Red | 1.91 | 0.42 |
| 2016-02-07 | PCU Black G00 | 4 | THUSC Silver 2 G00 | 1 | 2015 PTT G00 Division 1 Red | 0.72 | 1.21 |
| 2016-01-31 | PCU Black G00 | 0 | Washington Timbers Green G00 | 4 | 2015 PTT G00 Division 1 Red | 0.36 | 2.21 |
| 2016-01-30 | PCU Black G00 | 2 | Westside Timbers Samba TS G00 | 1 | 2015 PTT G00 Division 1 Red | 0.30 | 2.33 |
| 2016-01-23 | THUSC Silver 2 G00 | 2 | PCU Black G00 | 1 | 2015 PTT G00 Division 1 Red | 1.21 | 0.72 |
| 2015-07-26 | PCU Black G00 | 0 | FC Alliance B G00 | 3 | 2015 Crossfire Select GU15 Silver | 1.46 | 0.93 |
| 2015-07-25 | NSC Spirit G00 | 1 | PCU Black G00 | 0 | 2015 Crossfire Select GU15 Silver | 0.93 | 0.46 |
| 2015-07-25 | PCU Black G00 | 0 | FPSC Fury White G00 | 1 | 2015 Crossfire Select GU15 Silver | 0.75 | 1.46 |
| 2015-07-24 | Cascade FC White G00 | 1 | PCU Black G00 | 0 | 2015 Crossfire Select GU15 Silver | 0.67 | 1.15 |
| 2015-07-12 | PCU Black G00 | 1 | PCU Black Magic G99 | 0 | 2015 PCU Summer Classic U15–U16 Silver | 1.27 | 0.57 |
| 2015-07-11 | PCU Black G00 | 0 | Crossfire OR Blue II Rain G00 | 2 | 2015 PCU Summer Classic U15–U16 Silver | 1.06 | 0.85 |
| 2015-07-10 | PCU Black G00 | 0 | VUSA Timbers G00 | 0 | 2015 PCU Summer Classic U15–U16 Silver | 1.88 | 0.59 |
| 2015-07-10 | PCU Black G00 | 0 | Westside Timbers Samba G99 | 3 | 2015 PCU Summer Classic U15–U16 Silver | 0.43 | 1.67 |